

Inhalt

1	Über diese Anleitung
2	Sicherheit
3	Produktbeschreibung
4	Wartung und Pflege
5	Demontage und Entsorgung

Contents

1	About this manual
2	Safety
3	Product description
4	Maintenance and care
5	Dismantling and disposal

Índice

1	Acerca de estas instrucciones
2	Seguridad
3	Descripción del producto
4	Mantenimiento y cuidado
5	Desmontaje y eliminación

Sommaire

2	1	A propos de ces instructions	8
2	2	Sécurité	8
3	3	Description des produits	9
3	4	Entretien et maintenance	9
	5	Démontage et mise au rebut	9

Indice

4	1	Cenni sul manuale	10
4	2	Sicurezza	10
5	3	Descrizione del prodotto	11
5	4	Cura e manutenzione	11
5	5	Smontaggio e smaltimento	11

Содержание

6	1	О данной инструкции	12
6	2	Безопасность	12
7	3	Описание изделия	13
7	4	Обслуживание и уход	13
7	5	Демонтаж и утилизация	13

MUTO Comfort M 60

Montageanleitung
Mounting instructions
Instrucciones de montaje

Notice d'assemblage
Istruzioni per il montaggio
Инструкция по монтажу

WN 059460 45532/14450

2020-03

DE | EN | ES

EN

1 About this manual

1.1 Information about the manual
 This manual describes the mounting of the MUTO Comfort M 60 sliding door system. The mounting is shown using the example of a left-opening door. The mounting for right-opening doors is laterally inverted. Each different version (e.g. wall, ceiling, with side panel) is described separately. Mount the system as described in the corresponding chapter of the manual.

1.2 Target group
 The MUTO Comfort M 60 sliding door system may only be mounted by qualified personnel.

1.3 Symbols used

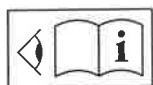
1.3.1 Safety instructions



CAUTION

This signal word indicates a situation of potential risk, which could lead to minor or slight injury if not averted.

1.3.2 Installation



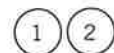
Follow the written instructions.



Reference to the assembly steps for the different versions (example shows: wooden panel, step 2)



Installation stages



Item numbers



Individual steps within an installation stage



Main closing edge

1.4 Intended use

- The sliding door system is only suitable for dry indoor areas.
- The sliding door system is only suitable for manual, slow opening and closing.

- 1.5 Requirements for the glass door panel**
- Toughened safety glass (TSG)
 - In areas with additional requirements, e.g. nurseries, the use of heat-soaked toughened safety glass (TSG-H compliant with DIN EN 12150-1) is recommended.
 - Laminated safety glass (LSG compliant with EN ISO 12543-1) made of 2 x TSG. Refer to separate installation instructions.
 - The clamping area must be flat and uncoated (no self-cleaning coatings).

1.6 Requirements for wall and mounting hardware

- The supporting structure/wall must be capable of bearing loads long-term, as well as level and perpendicular throughout (max. tolerance: 2 mm per meter).
- The mounting hardware must be suitable for the supporting structure/wall and of appropriate dimensions for the weight of the door panel. Refer to the technical instructions for the mounting hardware.
- The mounting hardware is not included.

2 Safety

- The sliding door system must be mounted by at least 2 persons
- Protective clothing must be worn.



CAUTION

Risk of injury due to inadequate mounting.

The mounting hardware must comply with the requirements for the supporting structure/wall and the weight of the door panel.

- Refer to the technical instructions for the mounting hardware.



CAUTION

Risk of injury from broken glass during mounting.

Incorrect mounting can lead to broken glass and injuries.

- Store glass on trestles or wooden blocks and ensure that it cannot fall.



CAUTION

Risk of injury by crushing.

Finger crushing may occur during mounting.

- Wear protective gloves.
- Lift glass with vacuum lifter and insert.

**CAUTION****Risk of injury due to incorrect cleaning of glass.**

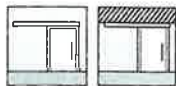
Incorrect cleaning of the glass can lead to the glass slipping out of its fittings and causing injury from broken glass.

- Use only silicone- and oil-free cleaning agents (e.g. acetone).

3 Product description

3.1 Parts included

3.1.1 Mounting on wall and ceiling



- 1 Track
- 2 End stop
- 3 End cap
- 4 dormakaba label
- 5 Cover profile
- 6 Floor guide
- 7 Glass edge protection
- 8 Roller carriages
- 9 Spring holder with screw.
- 10 Holder insert with screw, for cover profile

3.1.2 Mounting with DORMOTION



- 11 DORMOTION unit
- 12 DORMOTION trigger, with additional sleeve (9.5 mm)

3.1.3 Mounting on ceiling with side panel



- 13 Side panel profile
- 14 End cap for side panel profile
- 15 Filler profile
- 16 Gasket
- 17 End cap for floor profile (optional)
- 18 Floor profile (optional)
- 19 Glass profile (optional)
- 20 Glazing gasket (optional, in 3 versions)
- 21 Glazing gasket (in 3 versions)

3.1.4 Mounting with side panel and view protection profile



- 22 View protection profile
- 23 Glue pads (5x/m)

3.1.5 Mounting on wood



- 24 Wood adapter for rolling carriages
- 25 Floor guide for wooden door leaf

3.2 Technical data

glass thickness [mm]	8-12
side panel thickness [mm]	8-13.5
min. panel width (mm) without DORMOTION	600
min. panel width [mm] with DORMOTION	600
max. panel width [mm]	1300
max. panel height [mm]	2500
door panel weight [kg]	60



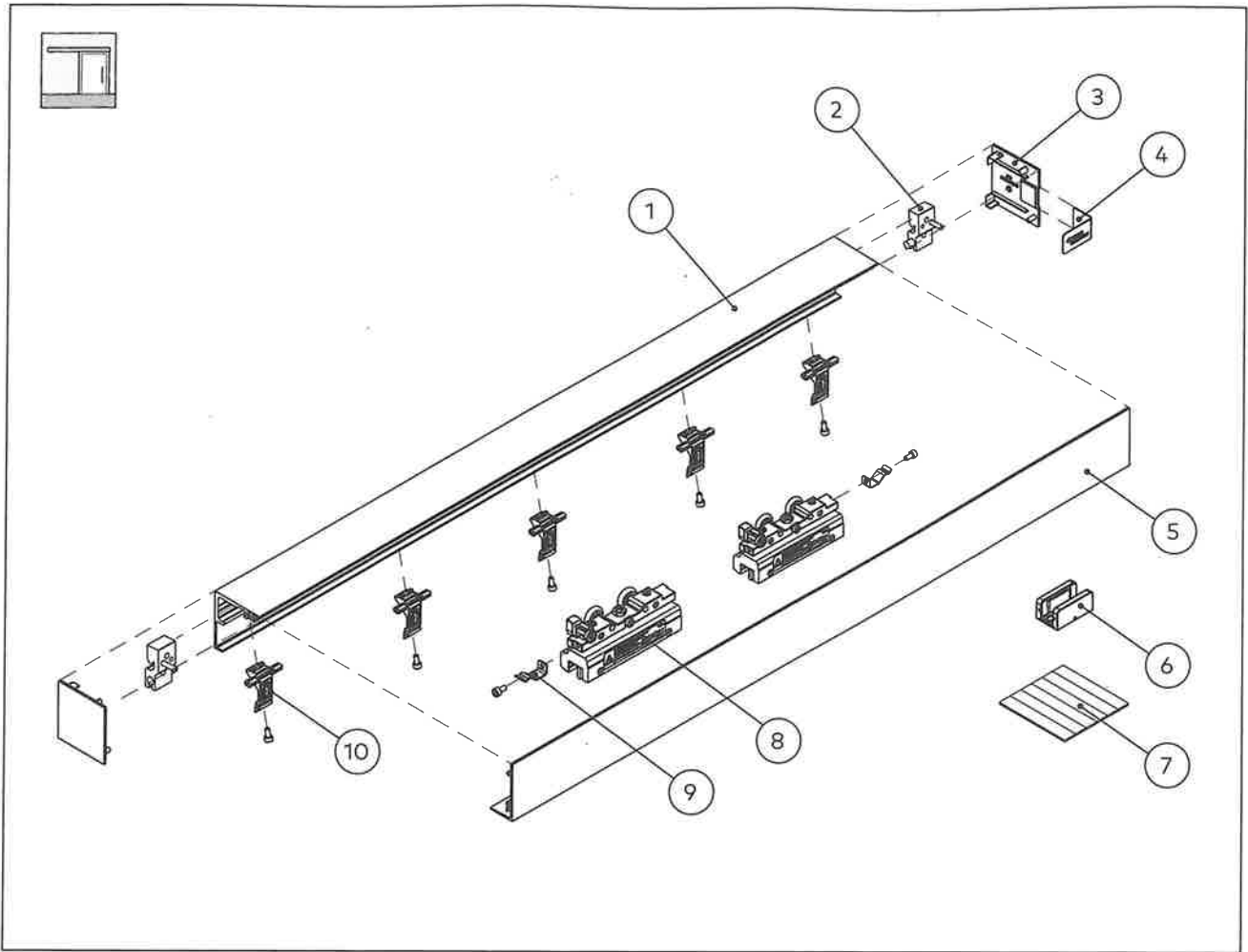
wood thickness [mm]	28-50
---------------------	-------

4 Maintenance and care

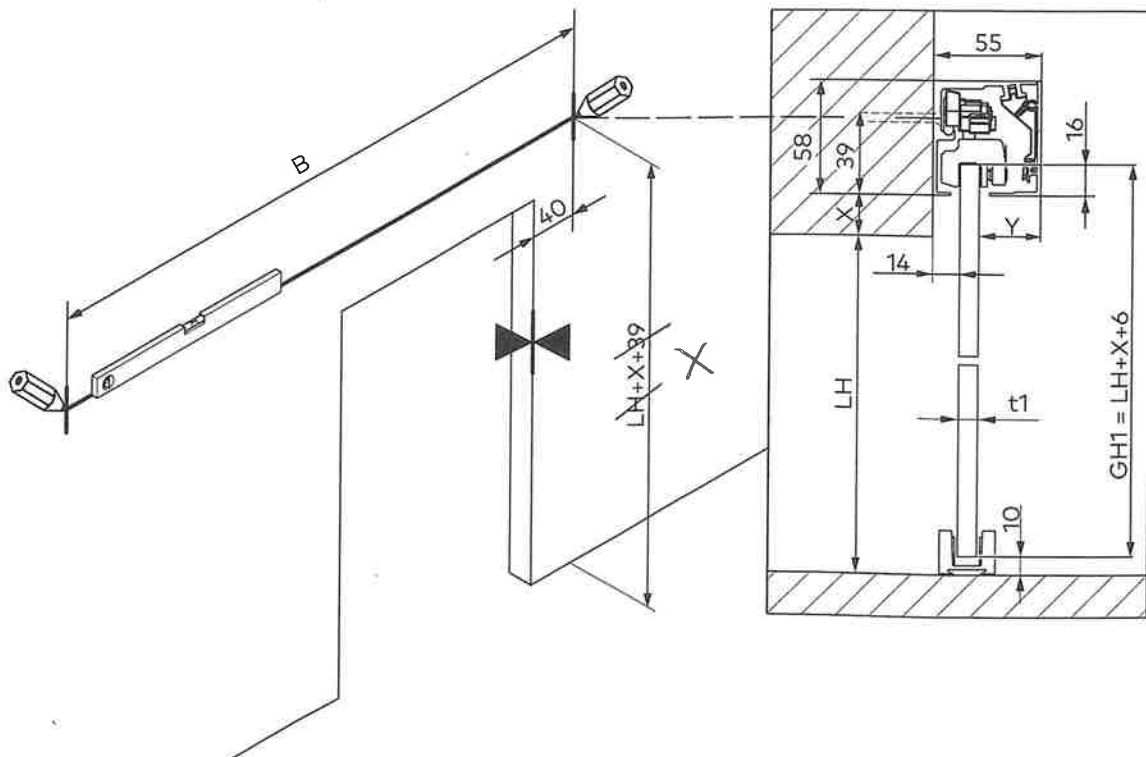
- at least 5 years maintenance-free operation (at 25 actuations per day)
- replace damaged components immediately
- use only original dormakaba parts
- occasional cleaning, especially of the running surface, only with a damp cloth

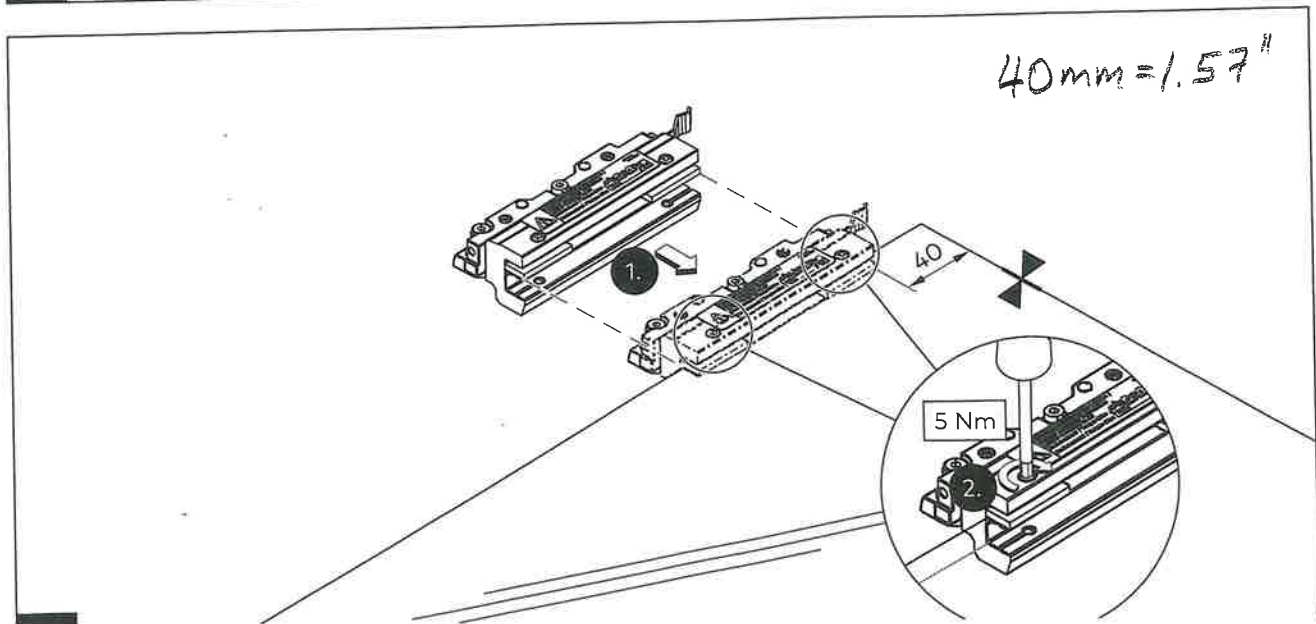
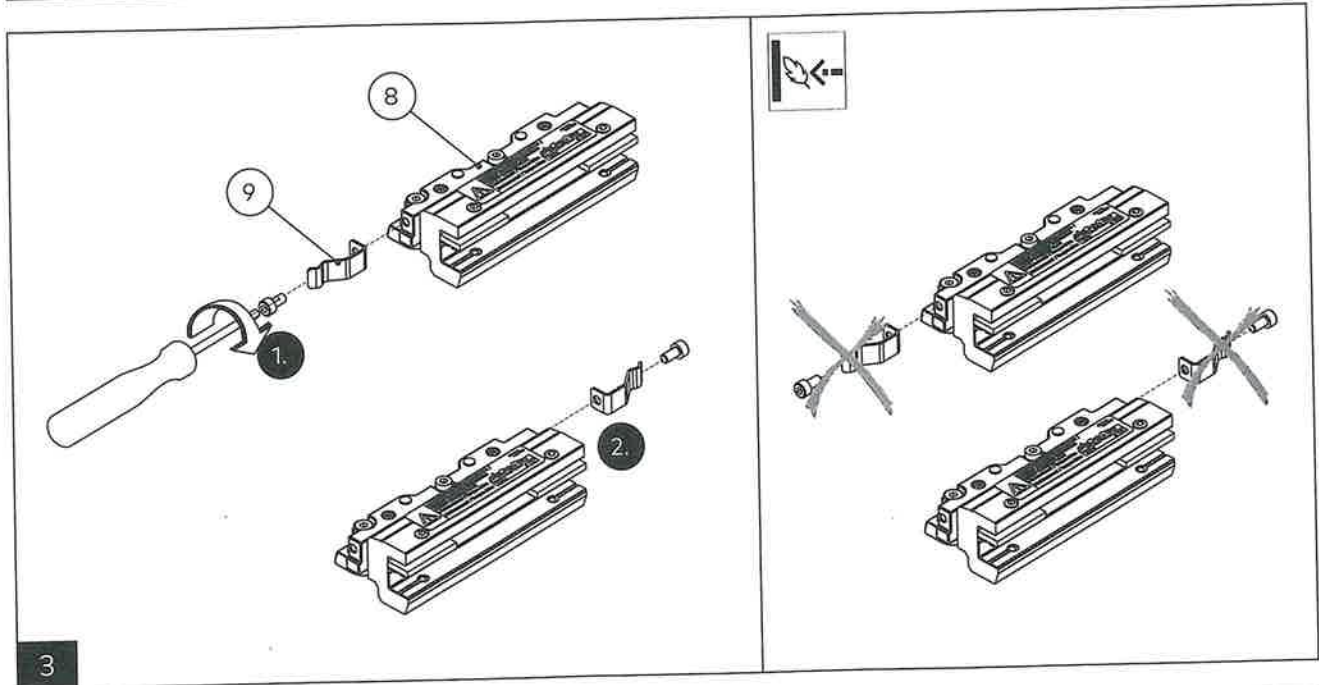
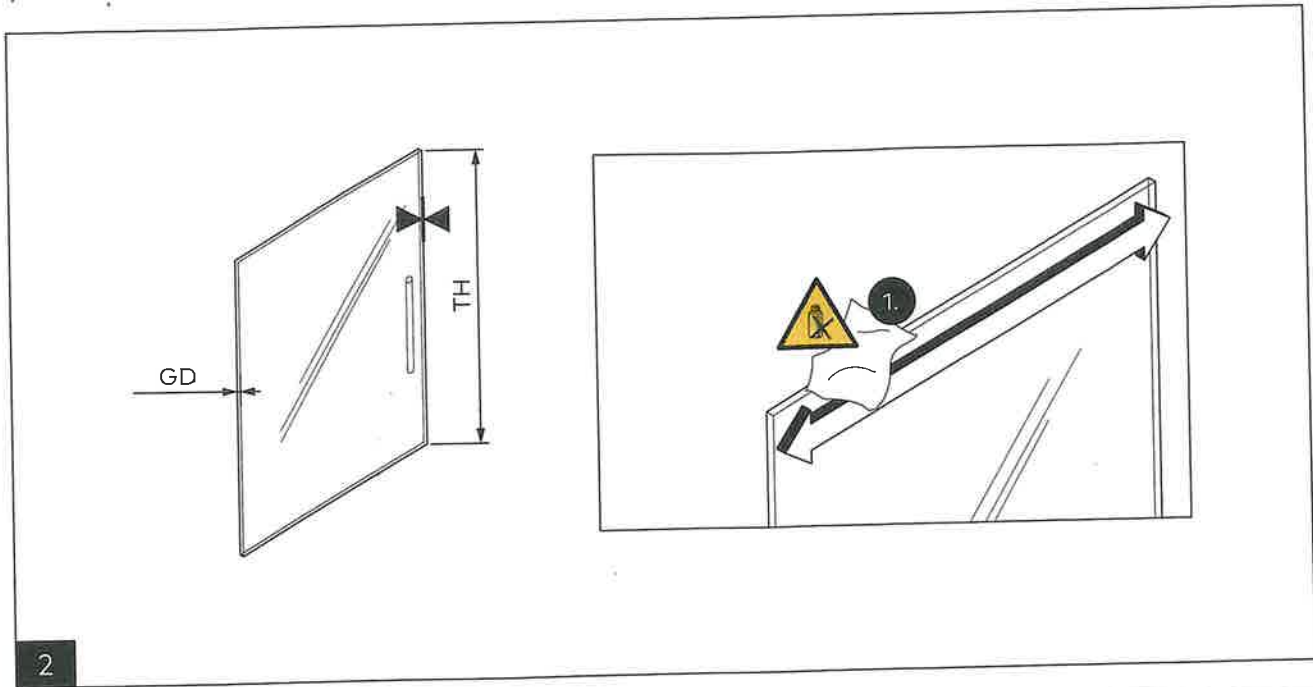
5 Dismantling and disposal

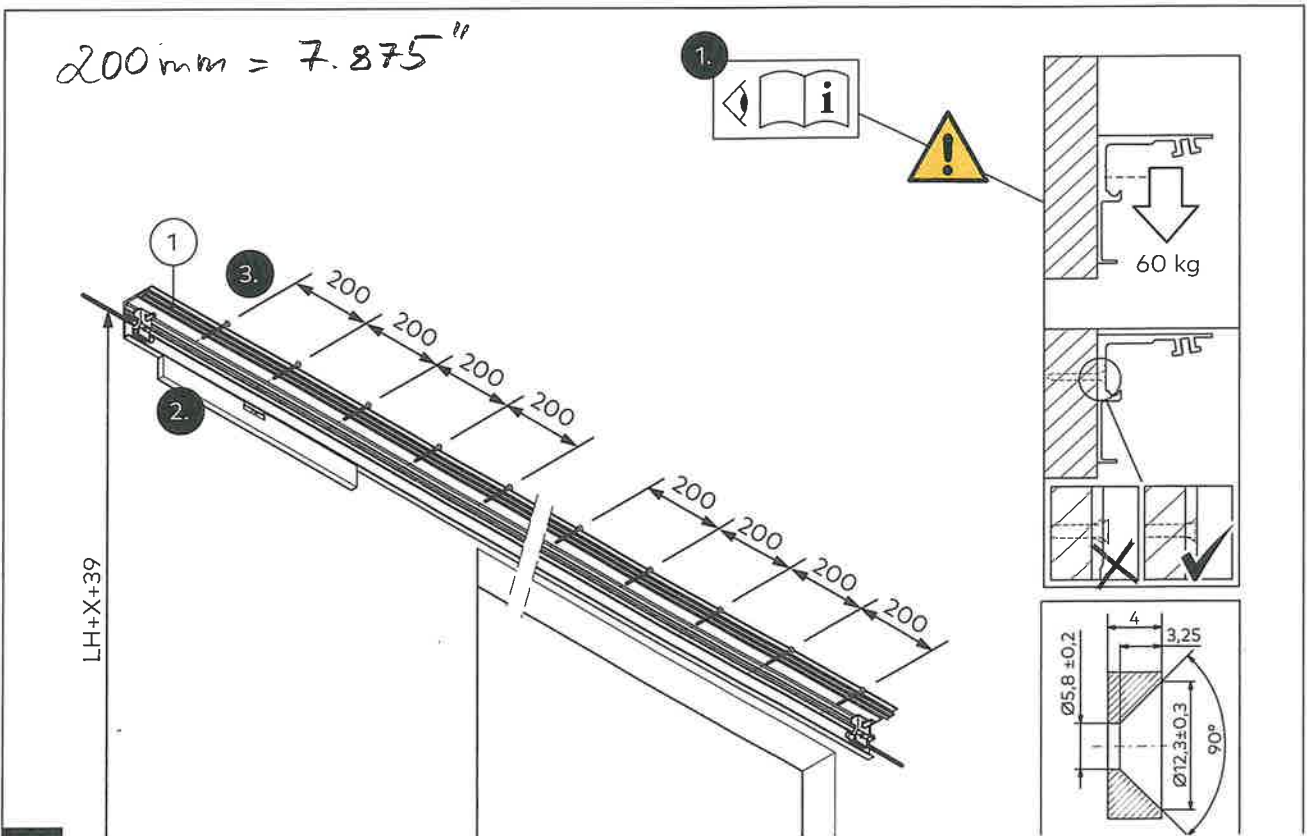
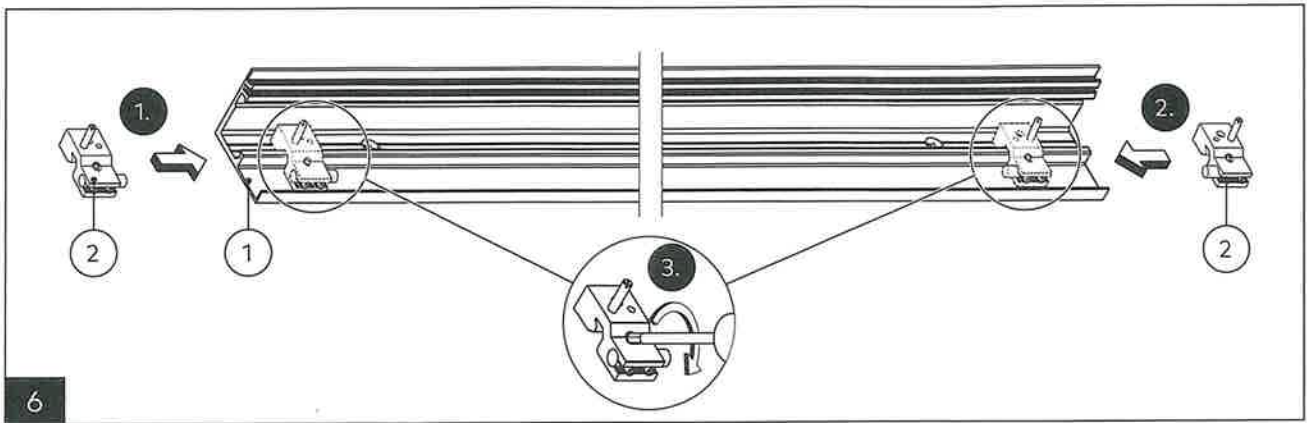
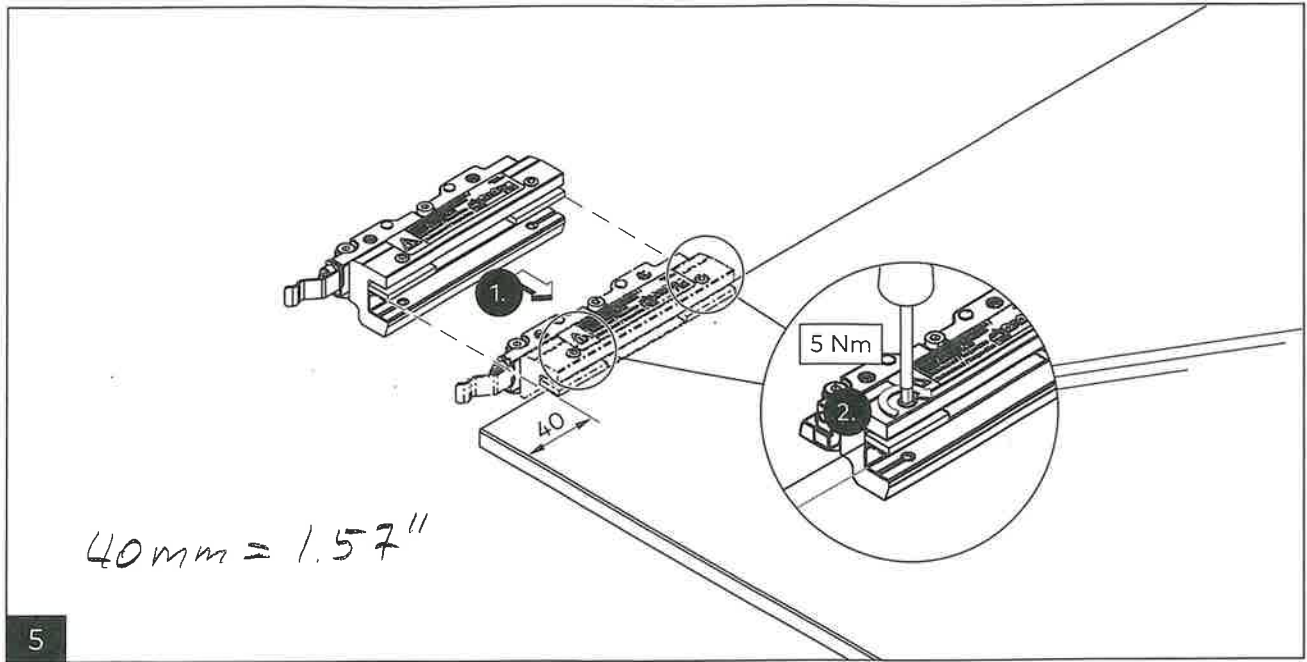
Dismantling is carried out in reverse order of the mounting instructions. Proper disposal is subject to valid national regulations.

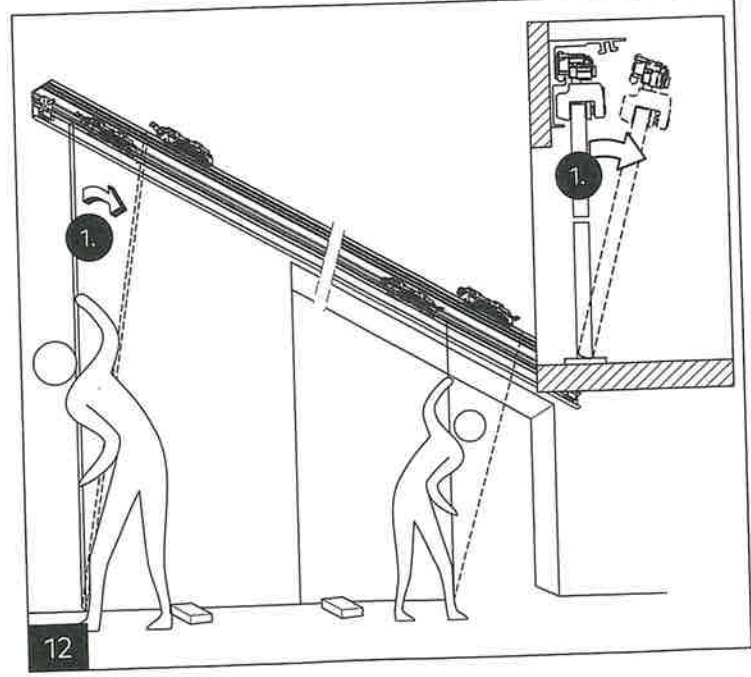
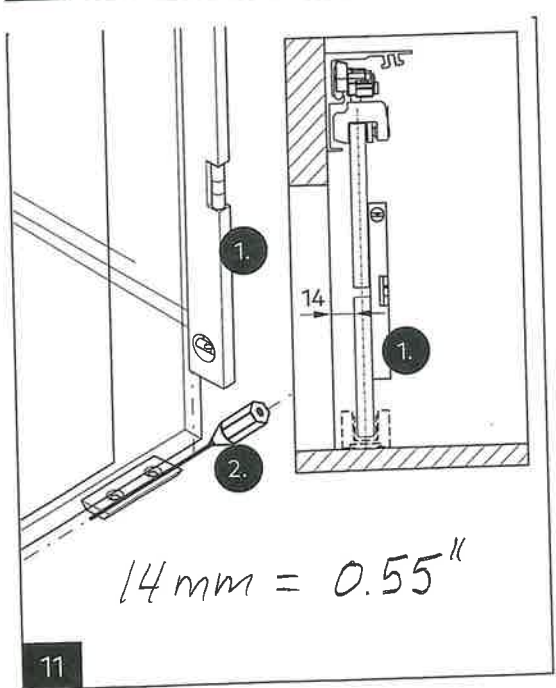
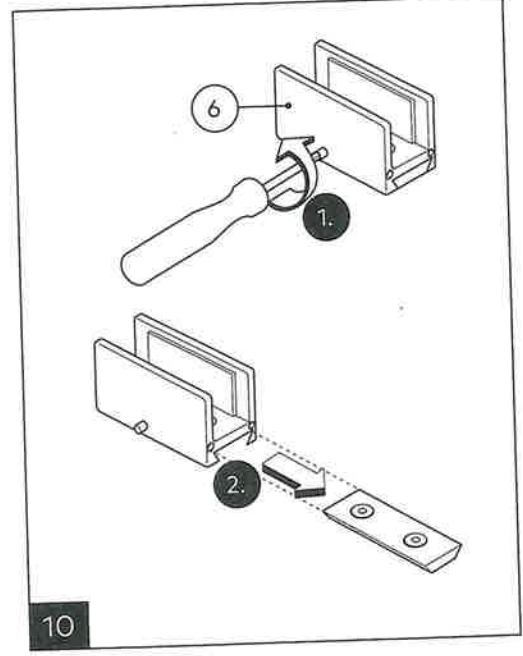
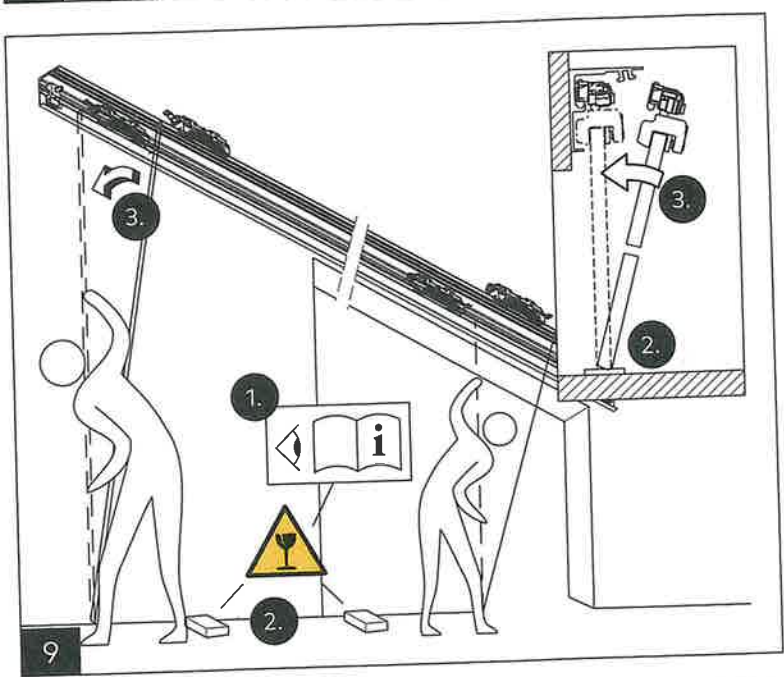
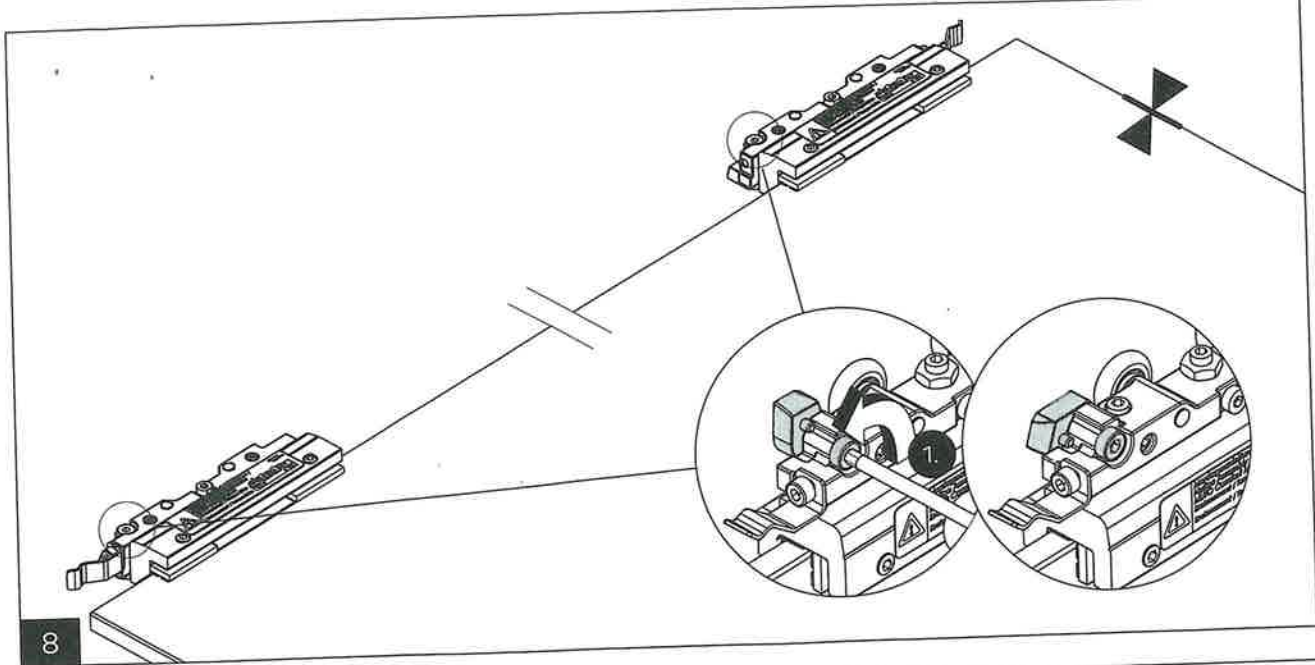


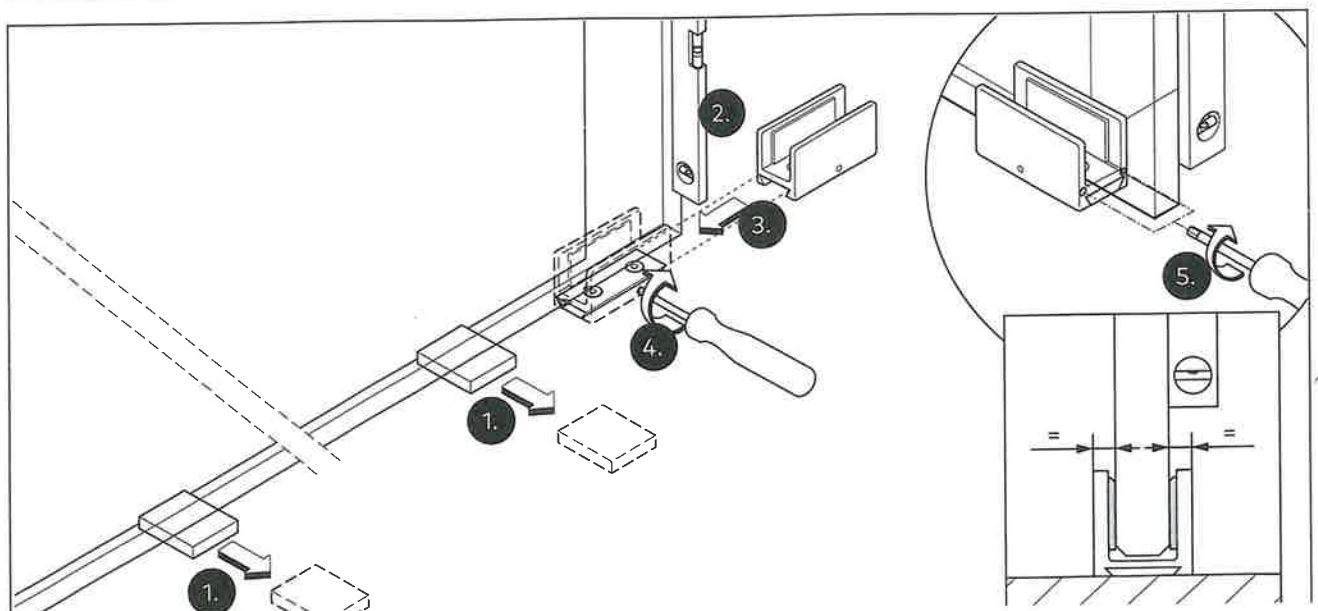
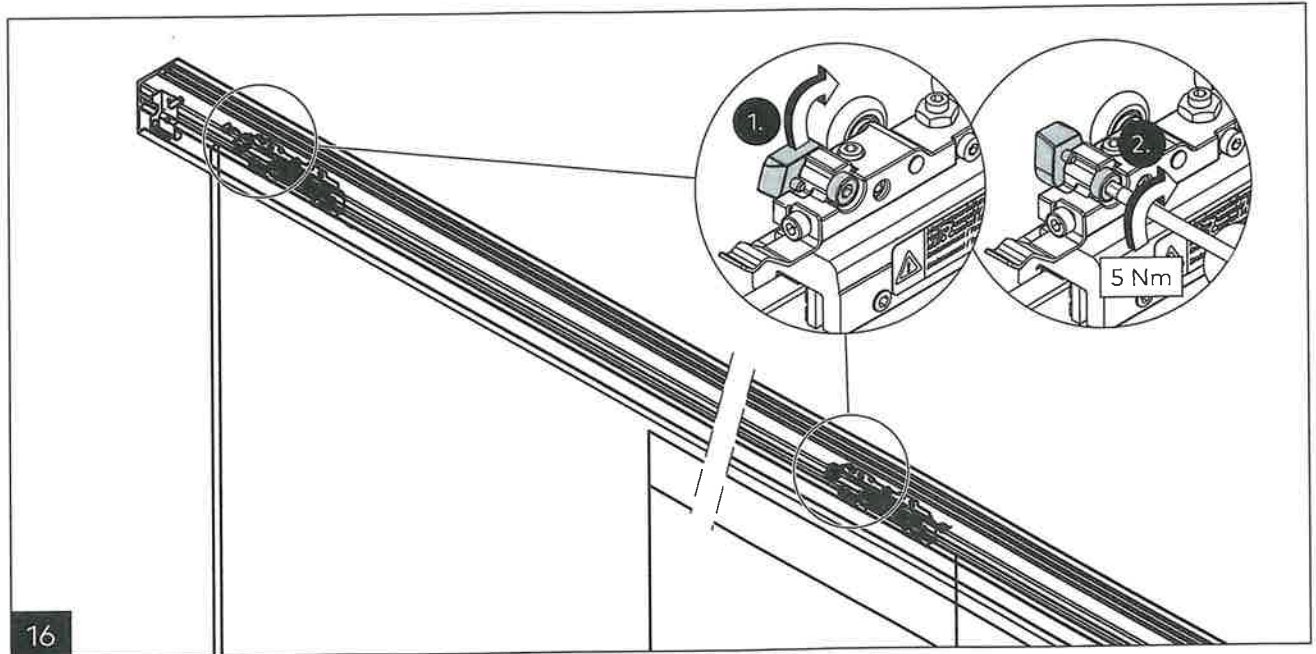
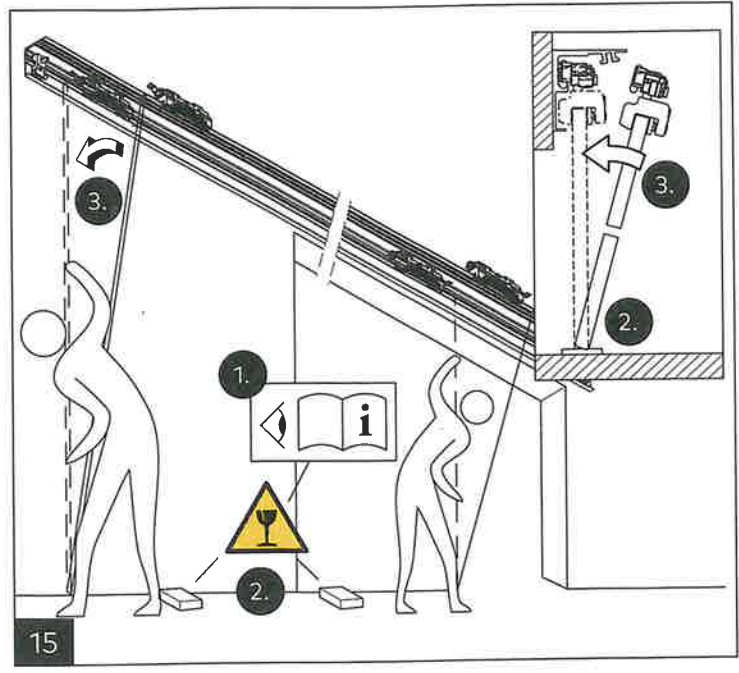
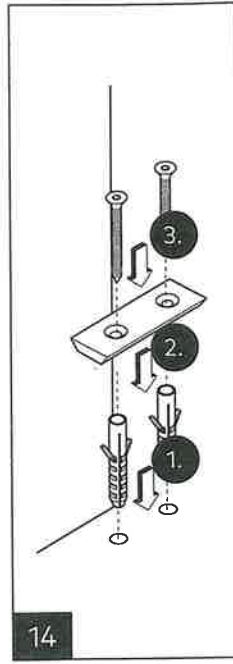
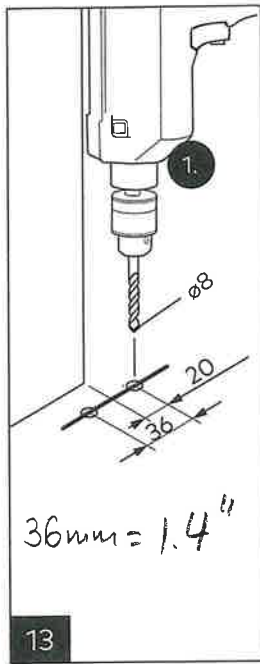
40mm = 1.57"
 X = 84.76"

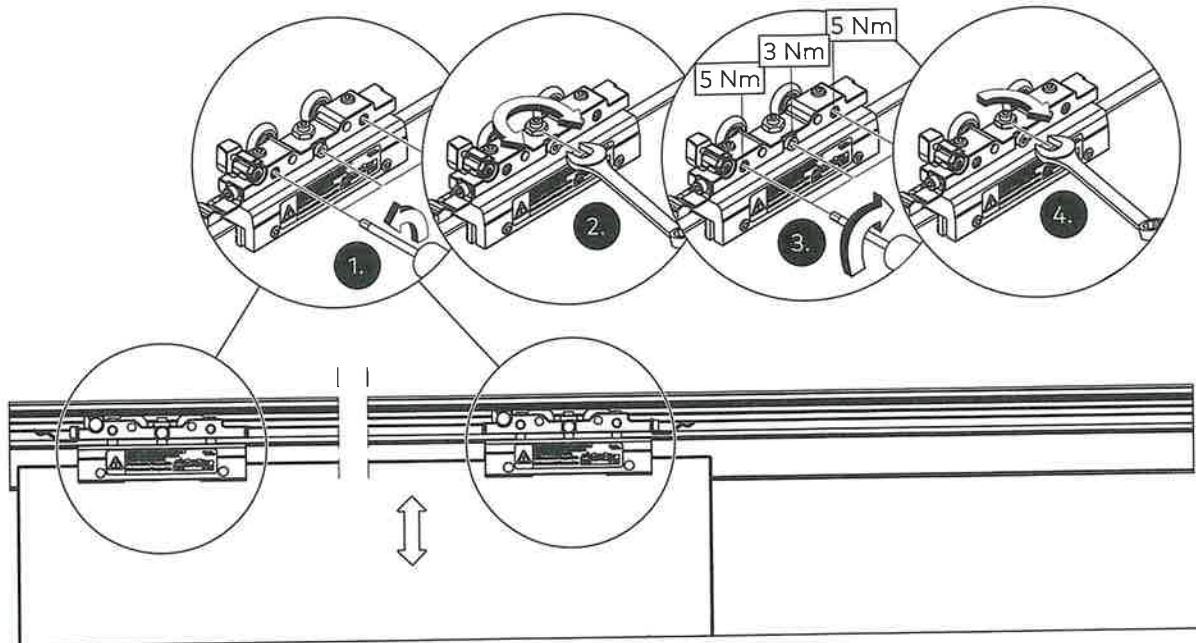
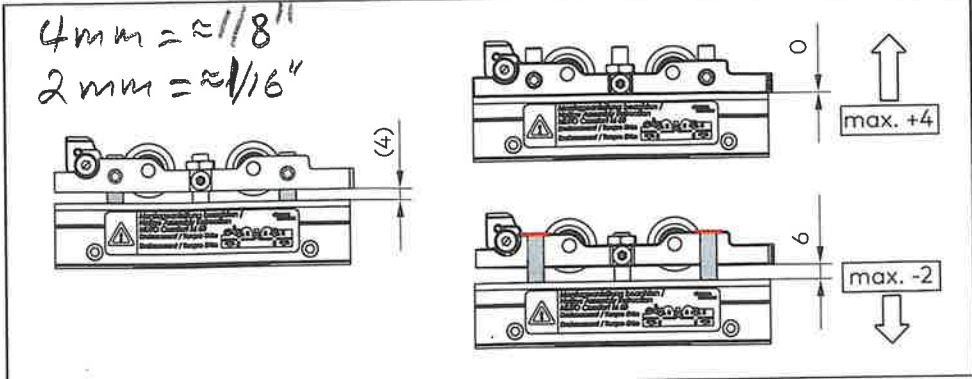
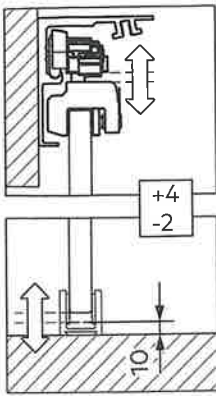




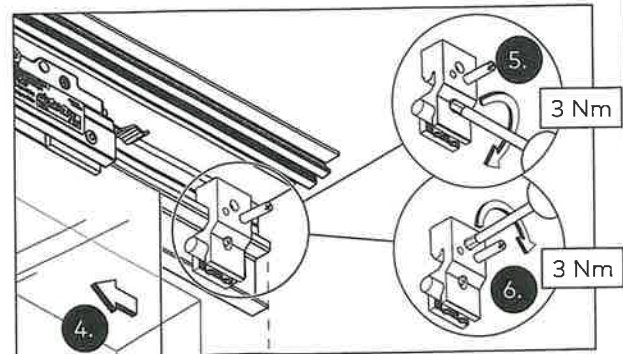
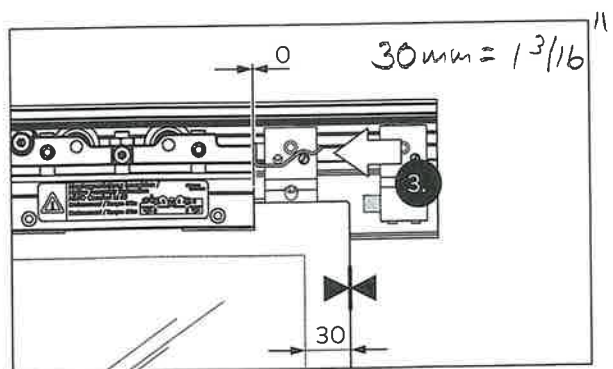
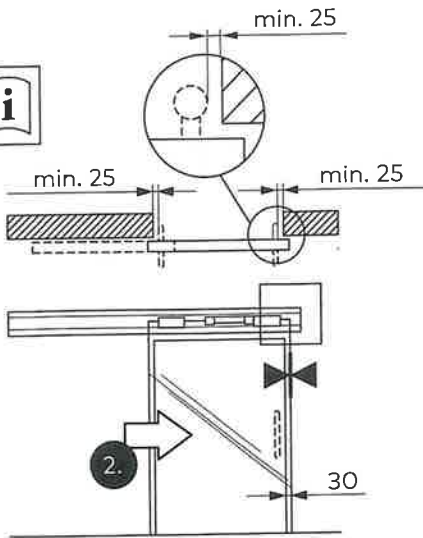
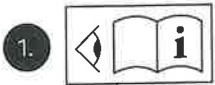
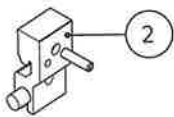




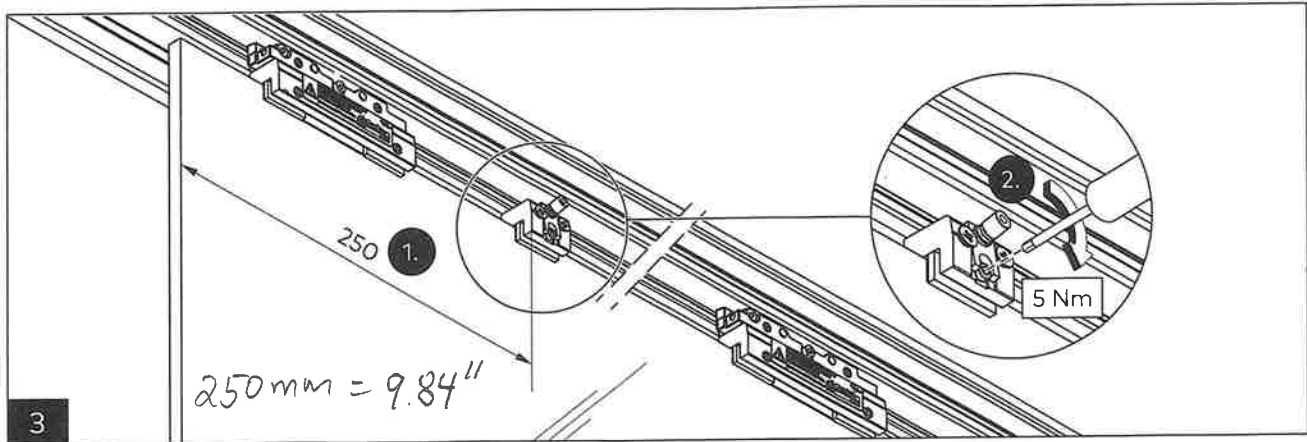
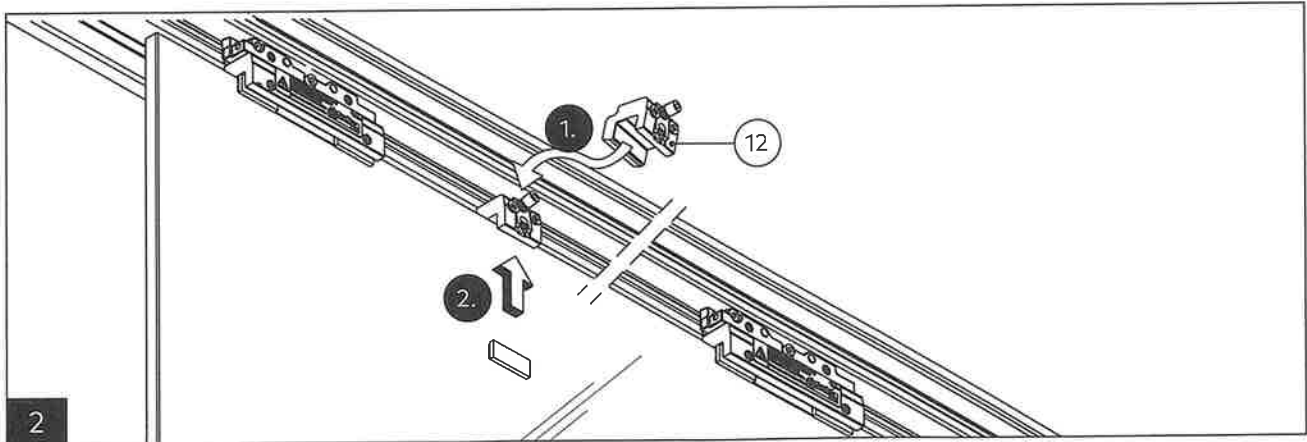
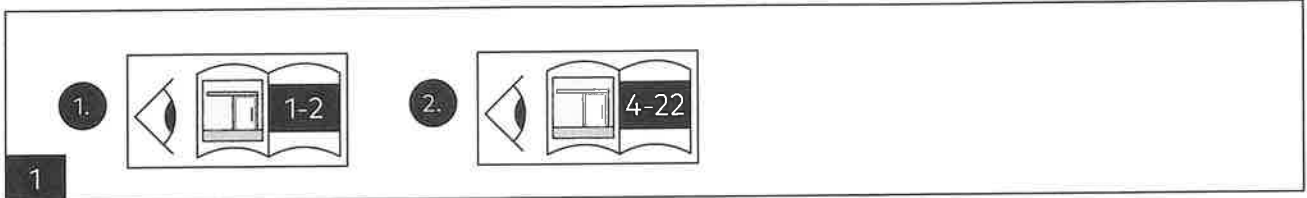
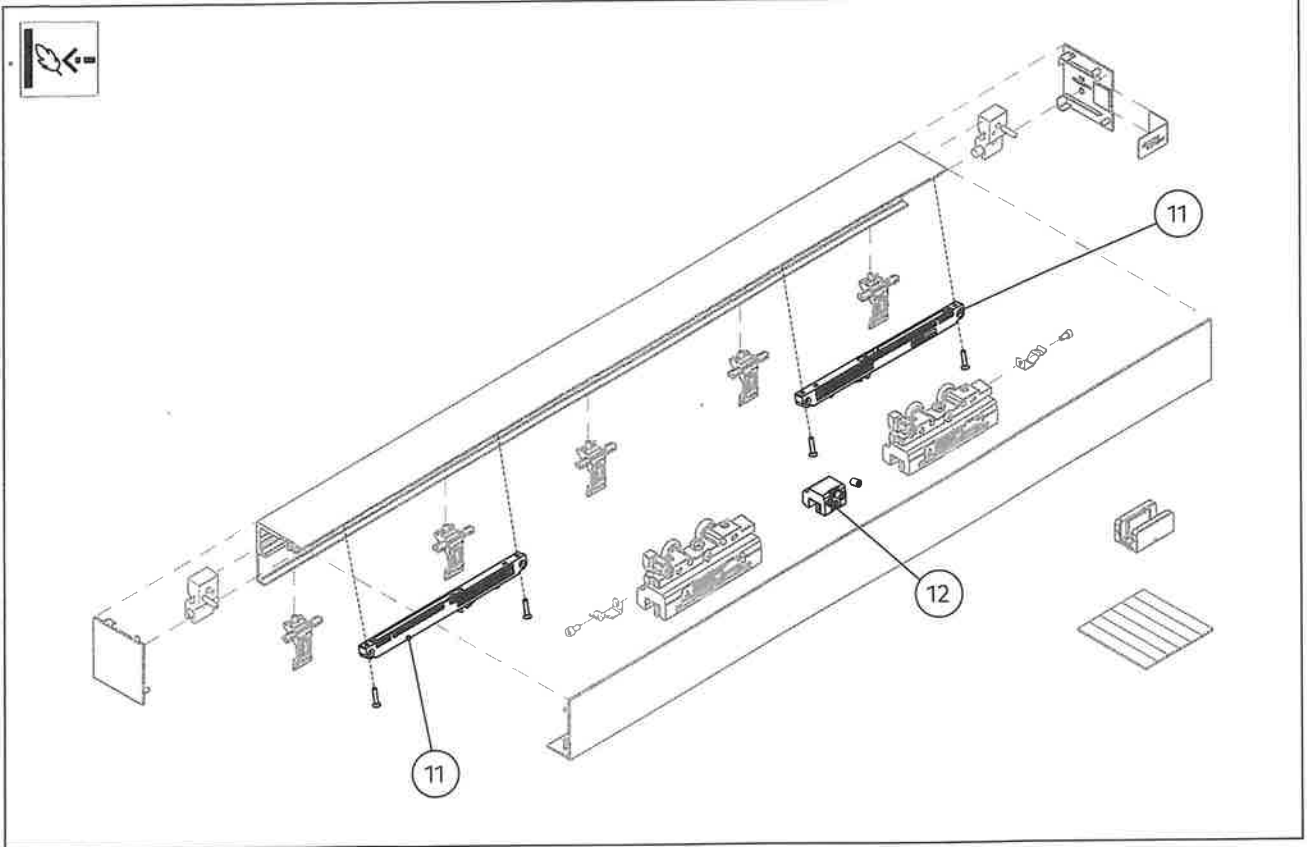


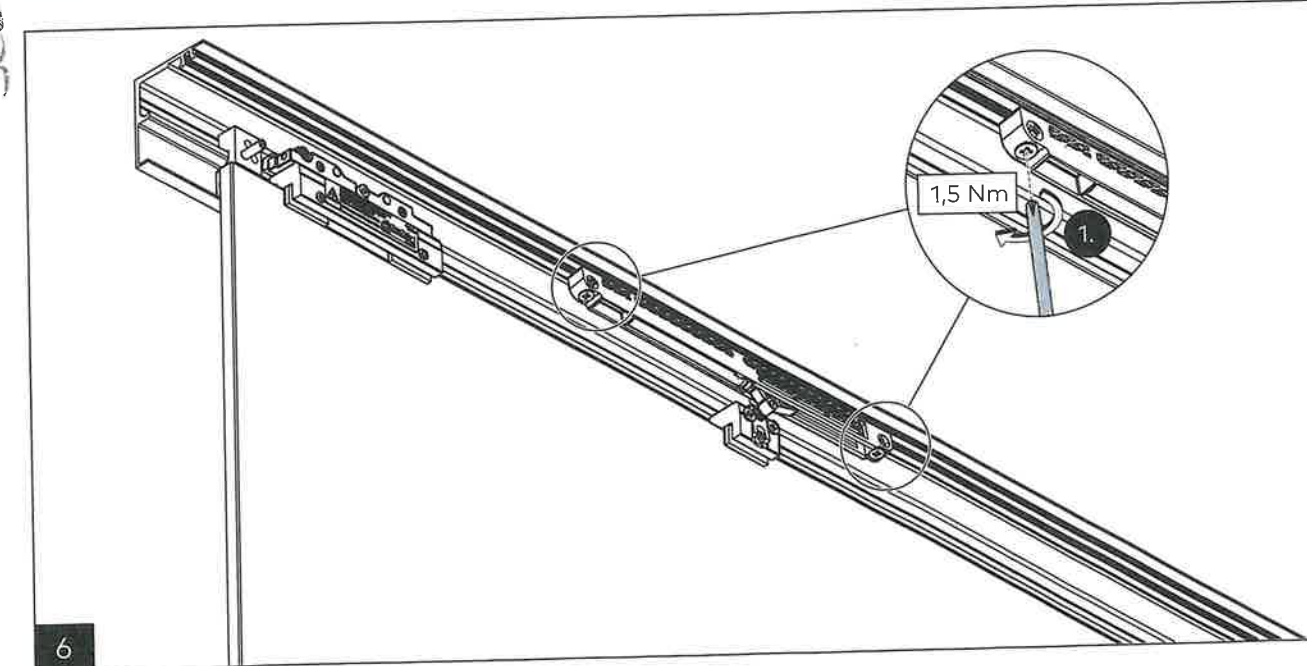
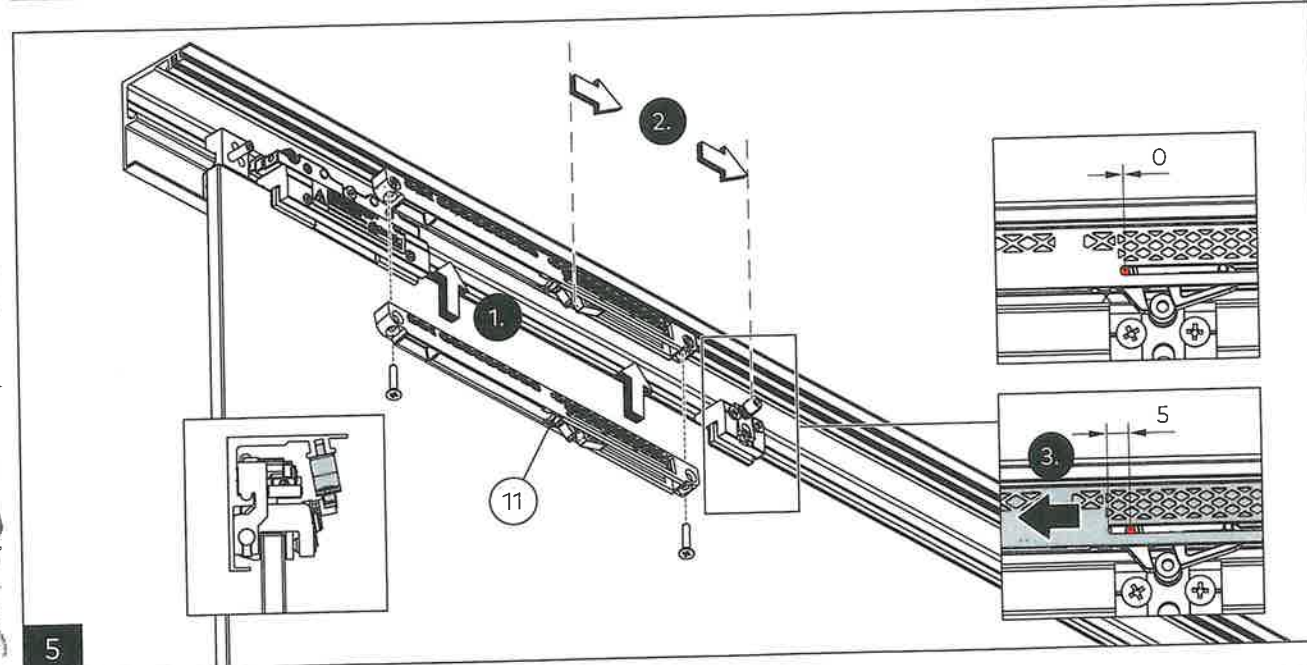
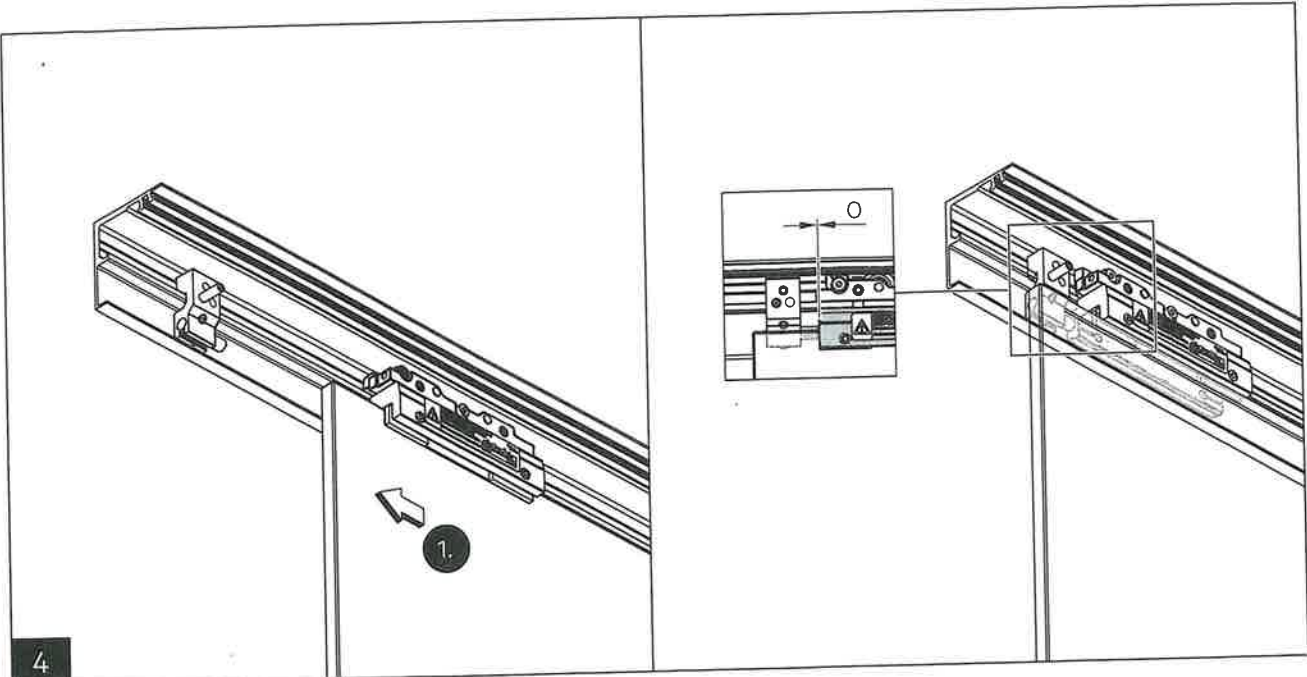


18



19



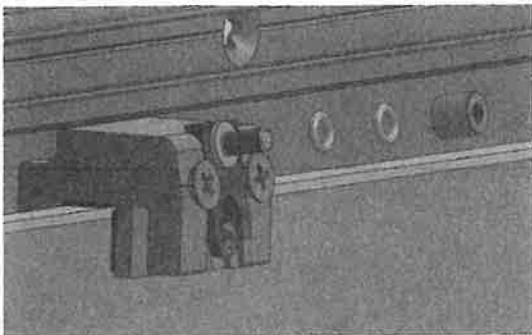


See Detail Installation

DORMOTION (DM) – Installation at M60

Use for Fig 5 and Fig 6 Page 23

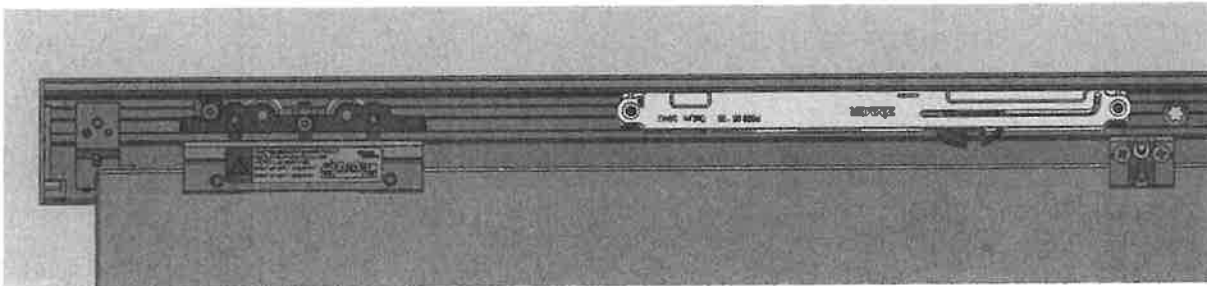
- Install and set up track rail, end stop, panel according to previous mounting instruction (WN 059460 45532).
- Mount the starter pin as described in Fig. 4, page 23.
- Instruction shows how to assemble and set up a M60 DM-unit on the left side (from page 23, Fig. 5).
- Remove plastic sleeve and both O-rings from the starter pin.



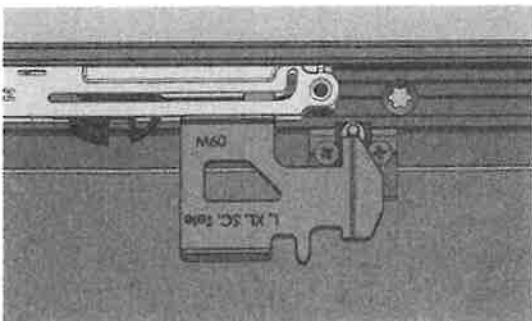
- Reassemble these three components after completing the DM-unit adjustments as shown in Figure 11A on page 26.

100 mm = 3 15/16"

- Move panel at least 100mm to the right of the end stop. Screw DM-unit into the track rail as shown in the picture below.



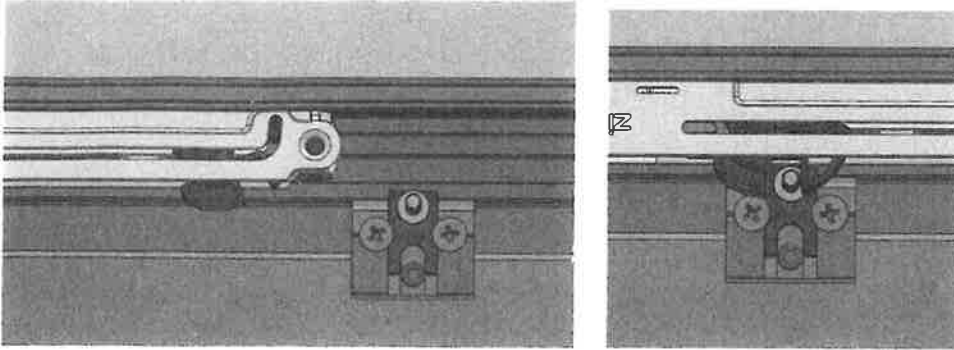
- Picture shows catch hook on DM-unit (green) in delivery condition. Position the starter approximately at the tip of the damper.
- Clamping screws for height adjustment of the starter pin are loose when delivered, pin is at the very bottom.
- Adjustment tool, usable for left and right.



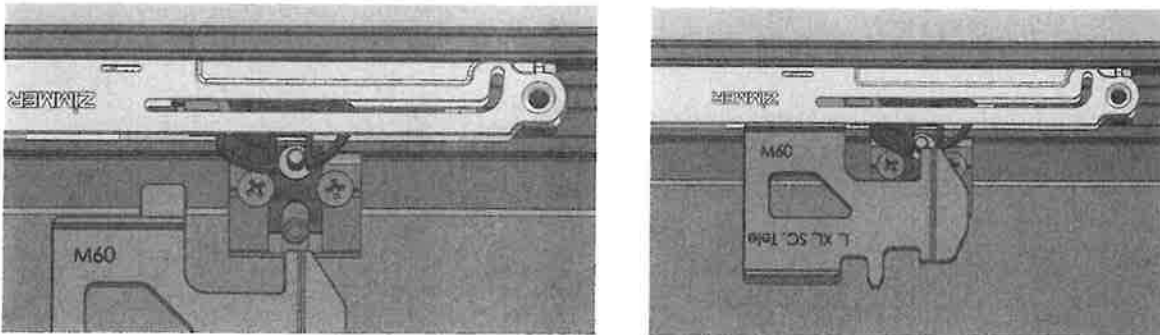
- Position the marked surface of the adjustment tool under the starter pin and press up the pin with plate until the adjustment tool rests against the DM-unit.
- Tighten screws. Starter pin now has the correct height for the catch hook of the DM-unit.

DORMOTION (DM) – Installation at M60

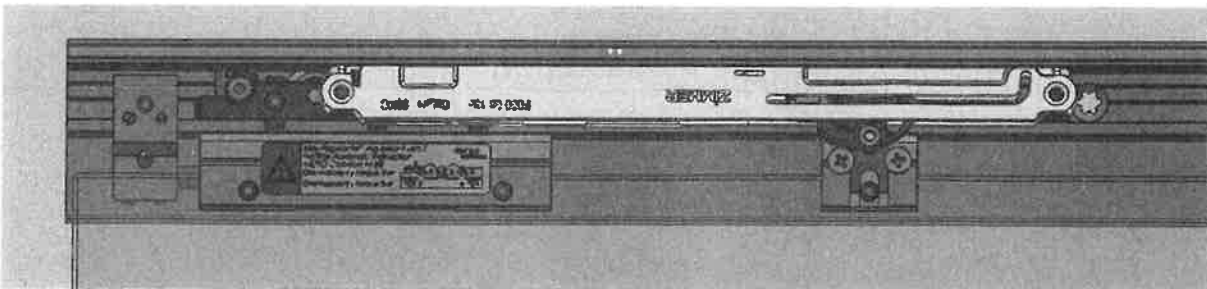
- Remove adjustment tool, move panel to the right so that it is no longer under the DM-unit.



- Tension DM-unit. To do this, pull the catch hook to the right.
- Move the panel into the DM-unit and let it retract to the end.



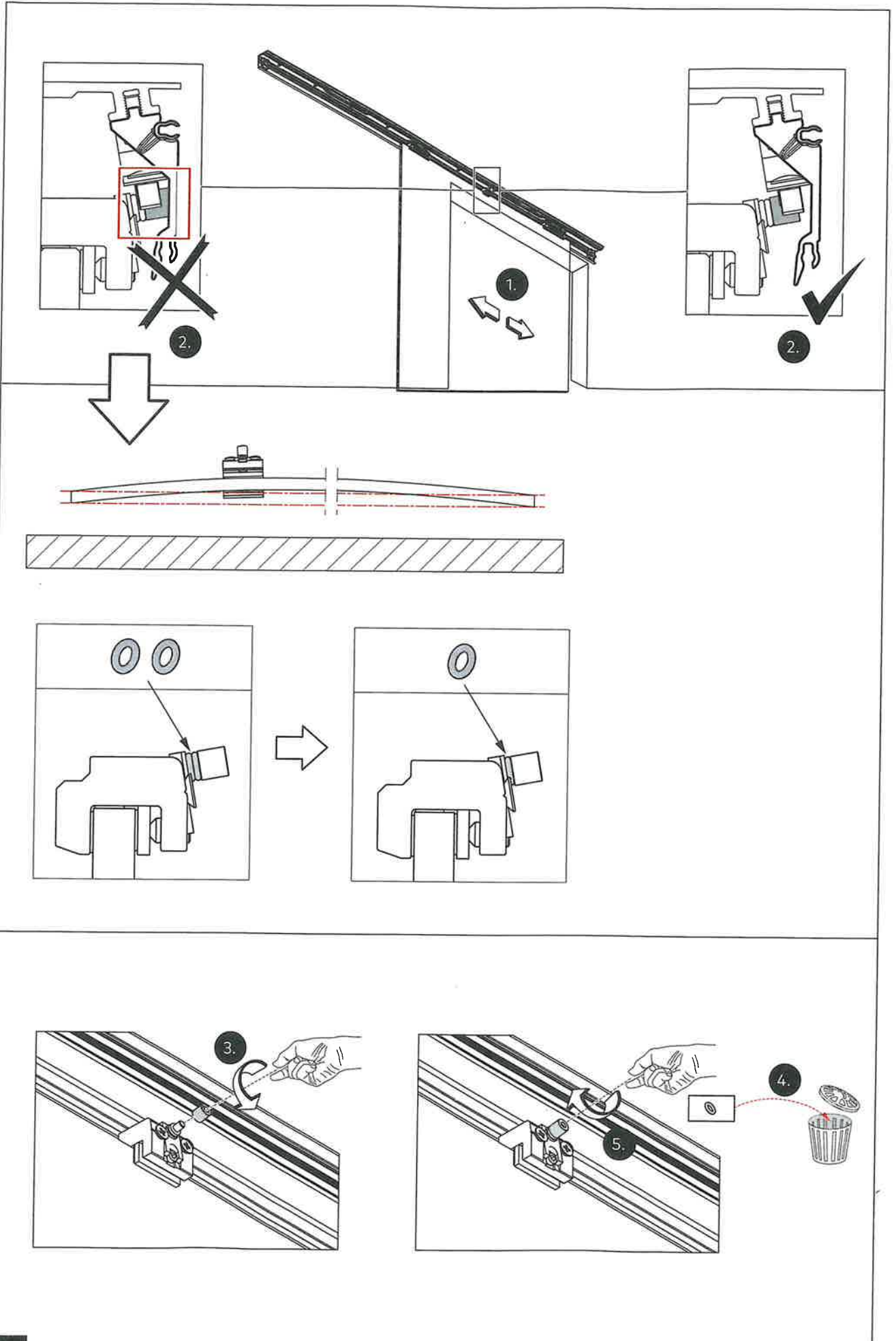
- Move the panel 10mm to the right again and thus move the DM-unit to the right as well. *10mm = 7/16"*
- Insert adjustment tool and release panel. DM-unit pulls the catch hook against the adjustment tool.

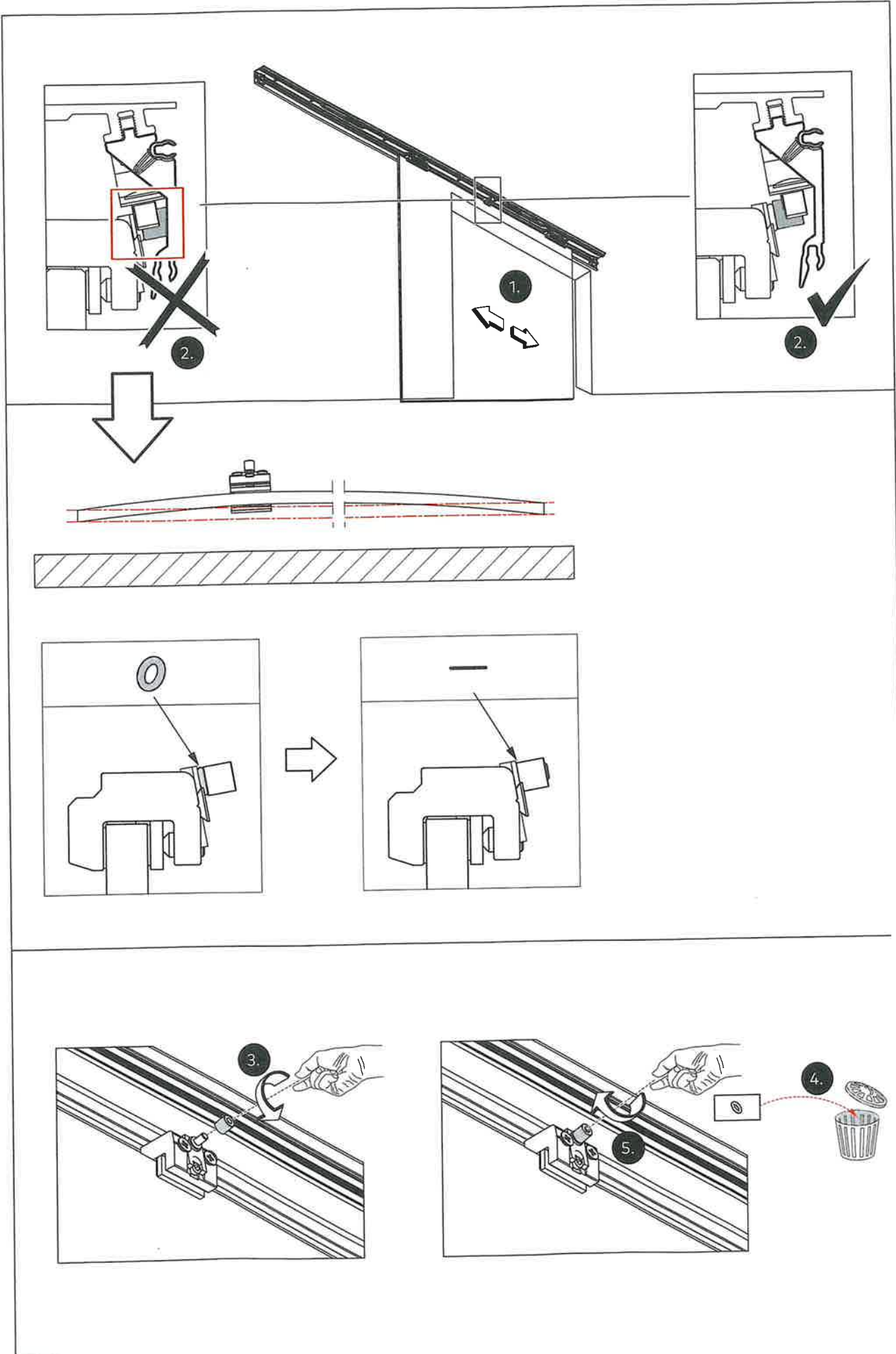


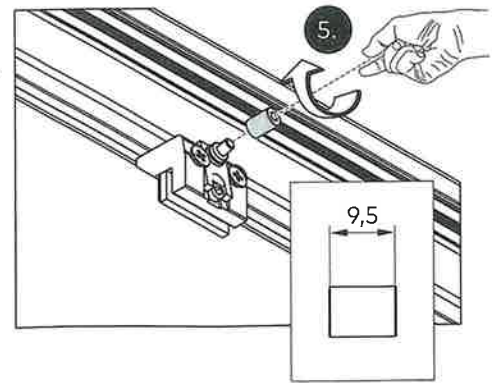
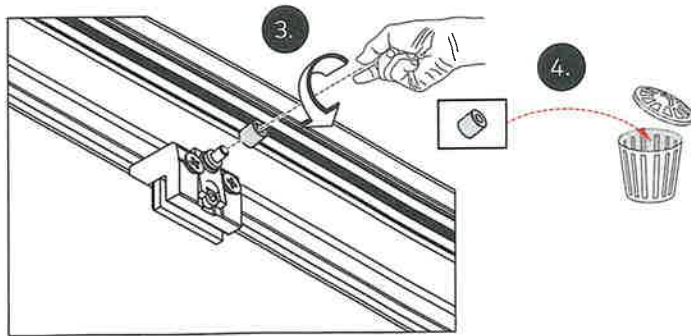
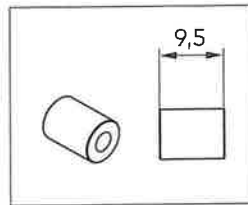
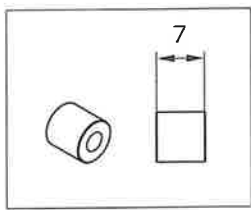
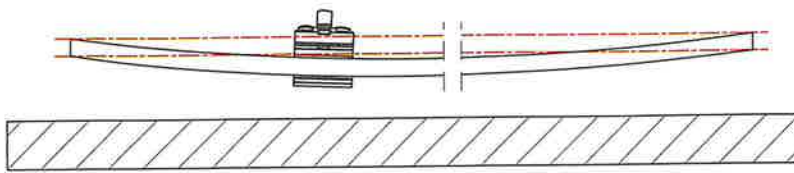
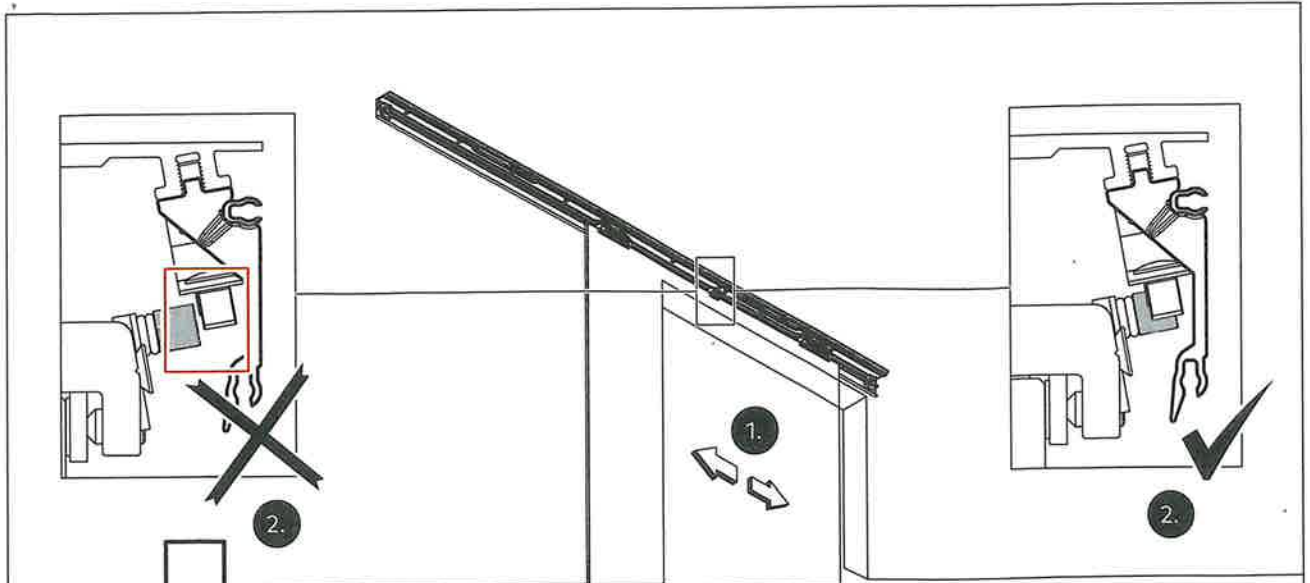
- Loosen the screw connection of the DM-unit in the track rail and push the panel to the left into its end position against the end stop.
- Tighten the screw connection of the DM-unit, then remove the adjustment tool.

The DM-unit is now correctly positioned in the track and the starter pin is at the correct height.

Then repeat the same procedure for the opposite DM-unit.







11C

12

